



FLORIA

R8 - NEW CAPITAL
RESIDENCE



5
FLORIA
R8 - NEW CAPITAL
RESIDENCE



ABOUT US:

Our seasons developments are introducing Floria 5, the compound where life is at full bloom and luxury, building a community that combines safety & serenity.

The clients' needs and comfort were a top priority in choosing the right place to develop our ambitious project, and for that, we have chosen the location to be in the R8 district, the new capital, providing convenience to all the residences.

We're qualified to deliver the highest qualities of properties, for we have strategic planning, passion and sheer grit to present a remarkable estate.

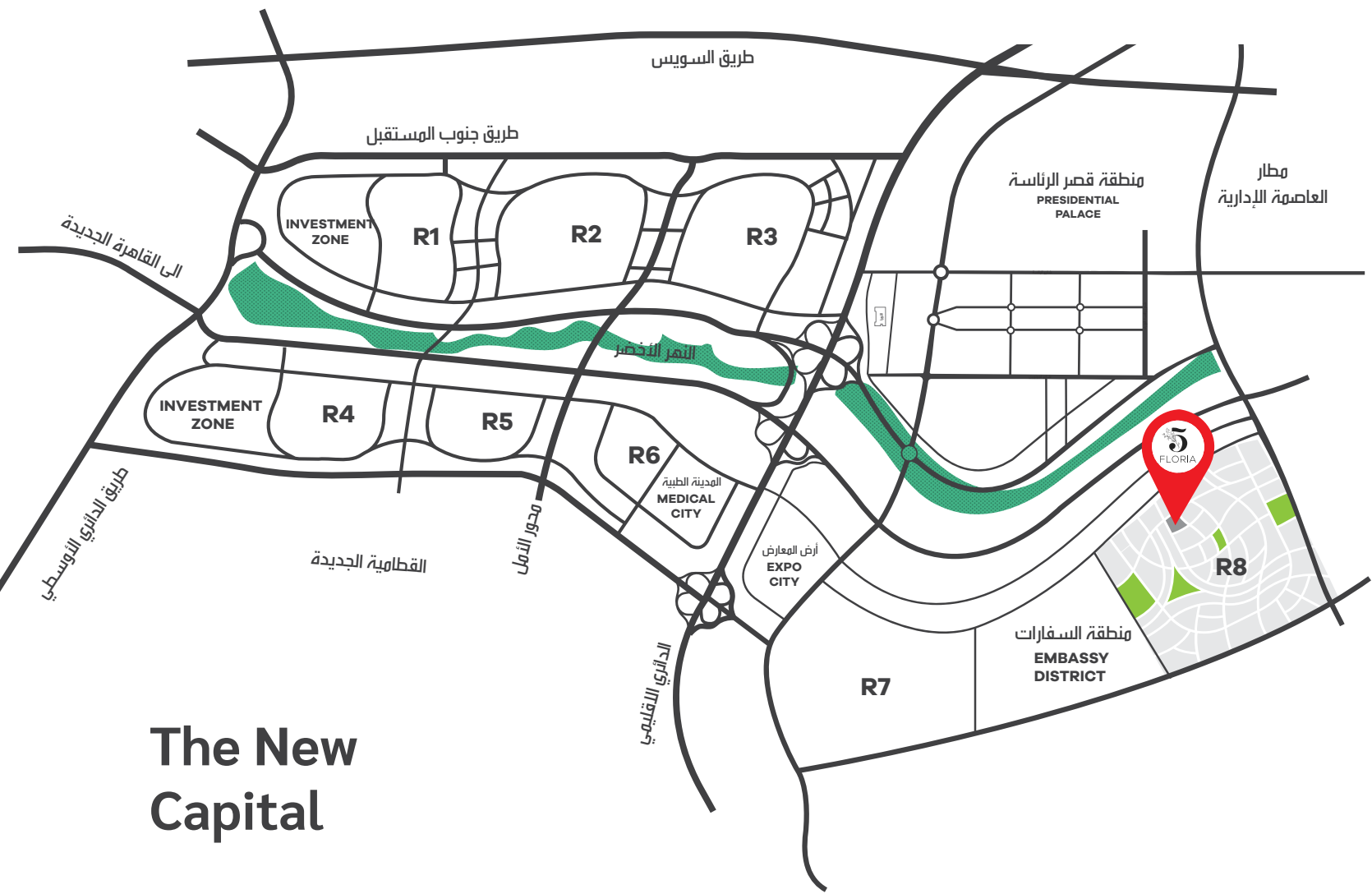
OUR VISION:

Our vision is to provide the highest standards in the real estate industry through innovating and developing projects that work in the clients' best interest.

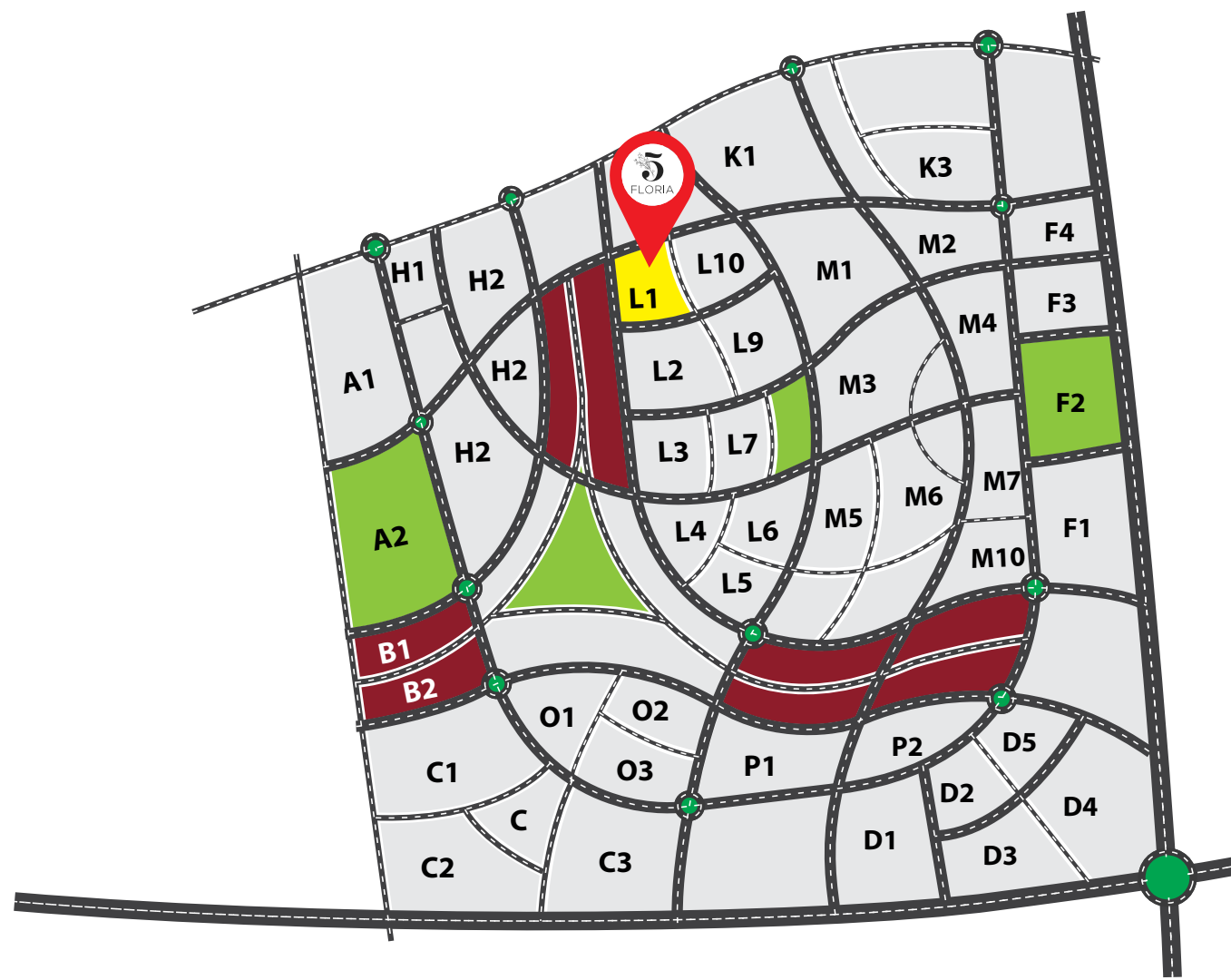
OUR MISSION:

We are eager to provide customers with the best service and provide them with the highest level of convenience. Creating a community that is safe and welcomes residents to start living life
Driven by dedication and eagerness, we aspire to present our clients with the height of luxury and life of convenience in creating communities that are safe and wholesome for all residents to enjoy life's pleasures.

OUR LOCATION THIS IS WHERE WE LIVE



The New Capital



R8 District

MASTER PLAN:



THIS IS HOW WE LIVE



CENTRAL PARK

Enjoy Floria 5's spacious 5 acres of a central park, connected to each of its 5 phases, giving you the perfect living experience. for we aim to promote community wellness, help provide clean air for all residents and create a safe place for everyone to go and have fun



THIS IS OUR PARK

THIS IS WHERE
OUR KIDS PLAY



KIDS AREA

At Floria 5, we made sure that joyful and youthful atmosphere is spread all over the kids' area with a variety of playgrounds, games and places for picnics that is both fun and safe for kids to enjoy and for parents to feel relieved.

HEALTH CLUB

Our facilities aren't limited, for we are providing an excellent health club for all of the residents who seek a healthy and fit lifestyle. our services have exceptional standards which include fitness classes, gyms, spas and top-notch medical equipment.



THIS IS WHERE
WE BREATHE



THIS IS WHERE
WE SHOP

SHOPPING MALL

Since shopping is essential to everyone, Floria 5 has brought the shopping mall to be close to the vital places in the compound.

The mall is containing the most famous and luxurious brands to satisfy our residents.



THIS IS WHERE
WE WALK

WALKING AREA

We also provide a walking area with beautiful surroundings, green landscape, to give motivation for a morning jog.

THIS IS WHERE
WE SWIM



SWIMMING POOLS

Enjoy our swimming pools for hot summer days to cool you off and guarantee you having pleasurable time for all the families. We've specialized pools for kids and adults that overlook the fantastic view of our luxurious compound.

OUTDOOR GYM

Floria 5 provides an outdoor gym for you to enjoy working out in the green area, breathe the fresh air and encourages having a healthier lifestyle, with its innovative equipment designed to appeal to all residents.



THIS IS WHERE
WE EXERCISE

SECURITY

Your safety is our number one priority, that's why we have a 24/7 working surveillance system and well-trained security team around the compound to ensure your safety & wellbeing.



THIS IS HOW
IMPORTANT WE ARE



THIS IS WHERE
WE HANG OUT

CLUBHOUSE

Our clubhouse is created as a place for happiness and joy for all the residents to have the best of times with their loved ones.

It includes fancy restaurants, places to host gatherings, and various activities that serve our residents so they can enjoy themselves and have a marvellous time.



THIS IS WHERE
WE PARK

PARKING SLOTS

No need to worry about finding a place to park your car, Floria 5 is offering a spacious parking slot, allowing you to park in no time.



THIS IS WHERE
WE HAVE FUN

BARBEQUE AREA

Spend a quality time with friends and family, have an outdoor gathering and enjoy cooking delicious freshly grilled food in our barbeque area that overlooks beautiful scenery.



THIS IS WHERE
WE PARTY

EVENTS HALL

Enjoy your events in a spacious full blended events hall ready to host parties, reception, or any social events. Floria luxurious events hub is at anytime ready to rock the compound and transform its spirit

LAUNDRY

In Floria 5 compound, you don't need to worry about any small details. our laundry and dry clean services are awaiting your call at any moment



THIS IS HOW
READY WE ARE



**THIS IS HOW
GREEN WE ARE**

PARKING CHARGER

As we follow technology trends in all aspects, Parking in Floria 5 is integrated with chargers for electric vehicles. Whether you own a normal or electric car, we have got you covered.

HEALTH-CARE

Your health and welfare are our top priority, this is why Floria5 compound has a health care unit equipped with materials in case of any emergency.



**THIS IS WHERE
WE ARE
TOOK CARE OF**



THIS IS HOW
WE PLAY TENNIS

TENNIS COURTS

Our mission to make Floria 5 a place filled with a positive atmosphere and energy isn't over, as we also included tennis courts for all of the residents to have a marvellous time playing tennis with their loved ones.



THIS IS WHERE
WE GO CYCLING

BICYCLE LANES

Every detail when planning to make Floria 5 a better place for all residents was well thought, so we've made bicycle lanes to encourage people to lead a healthy life and reduce pollution.

FOOTBALL PLAYGROUNDS

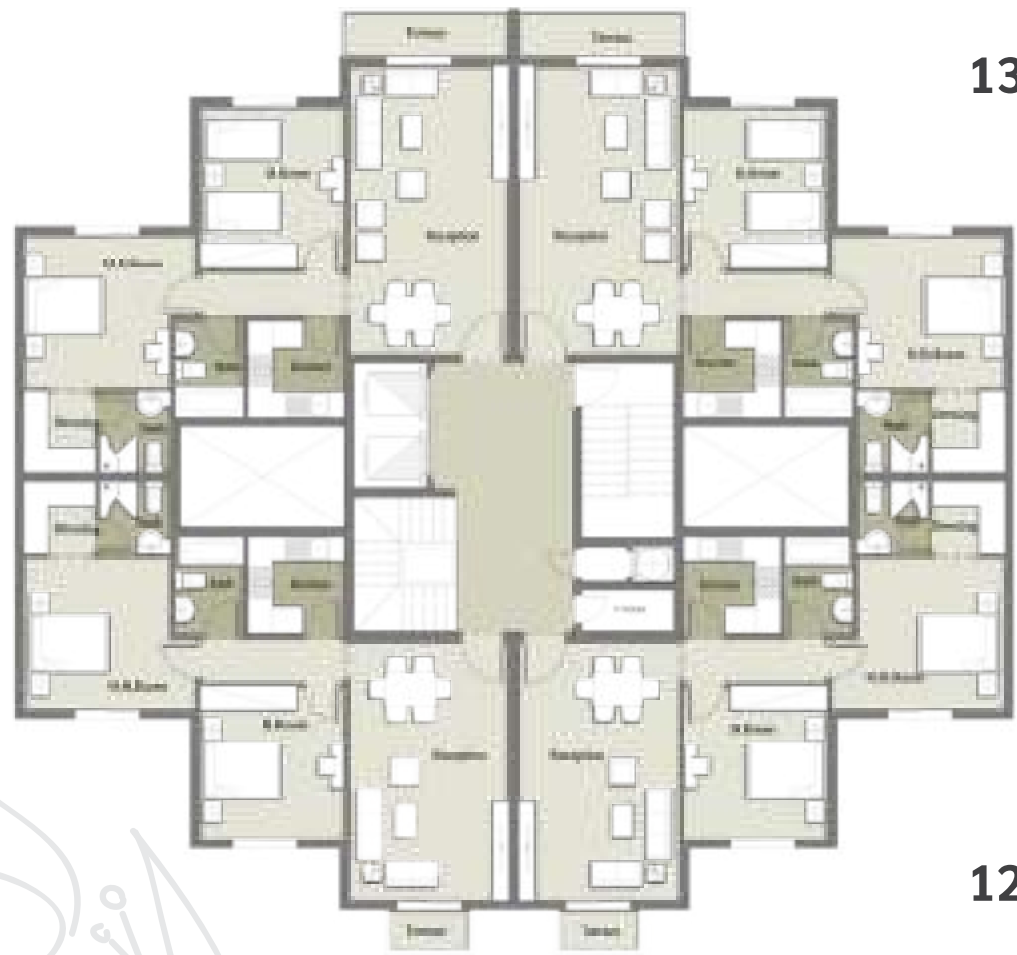
Our mission to make Floria 5 a place filled with a positive atmosphere and energy isn't over, as we also included tennis courts for all of the residents to have a marvellous time playing tennis with their loved ones.



THIS IS WHERE
WE PLAY FOOTBALL

FLOOR PLANS





130 m²

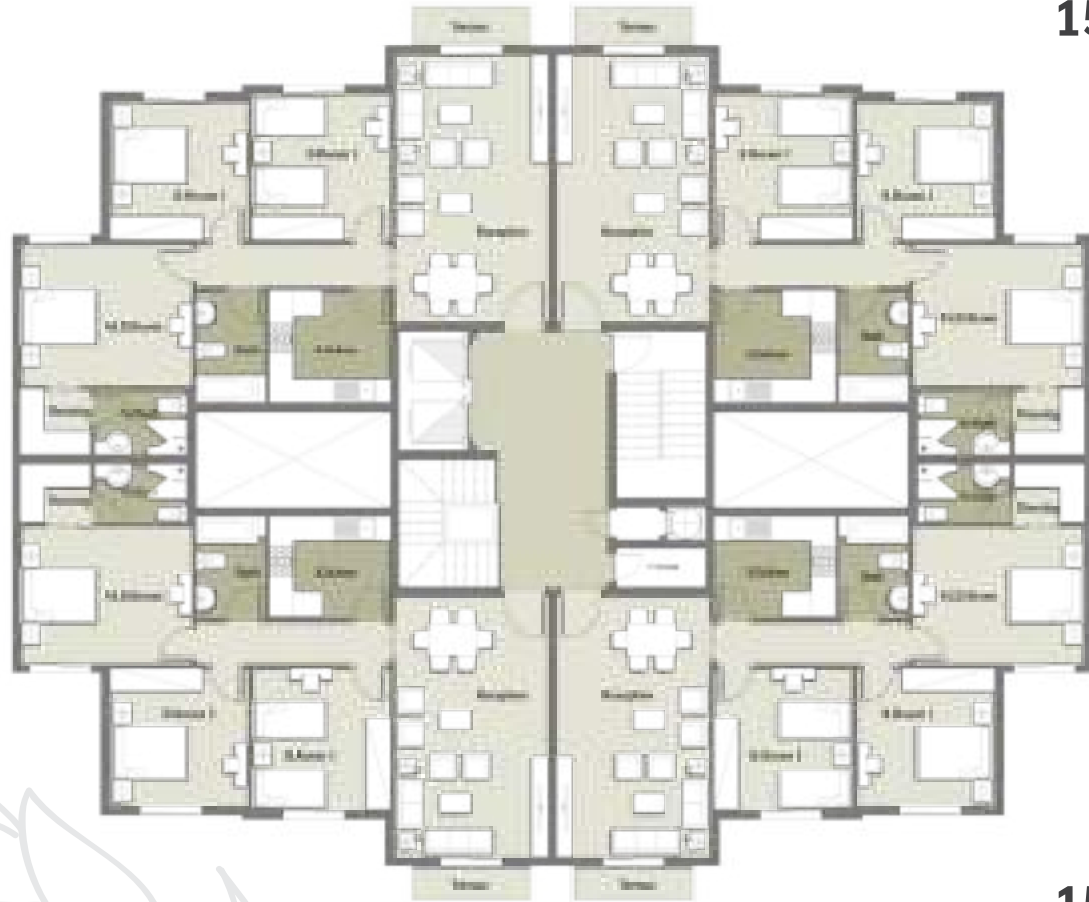
120 m²

Type A



5
FLORIA
R8 - NEW CAPITAL
RESIDENCE

156 m²



150 m²

Type B





167 m²

163 m²

Type C



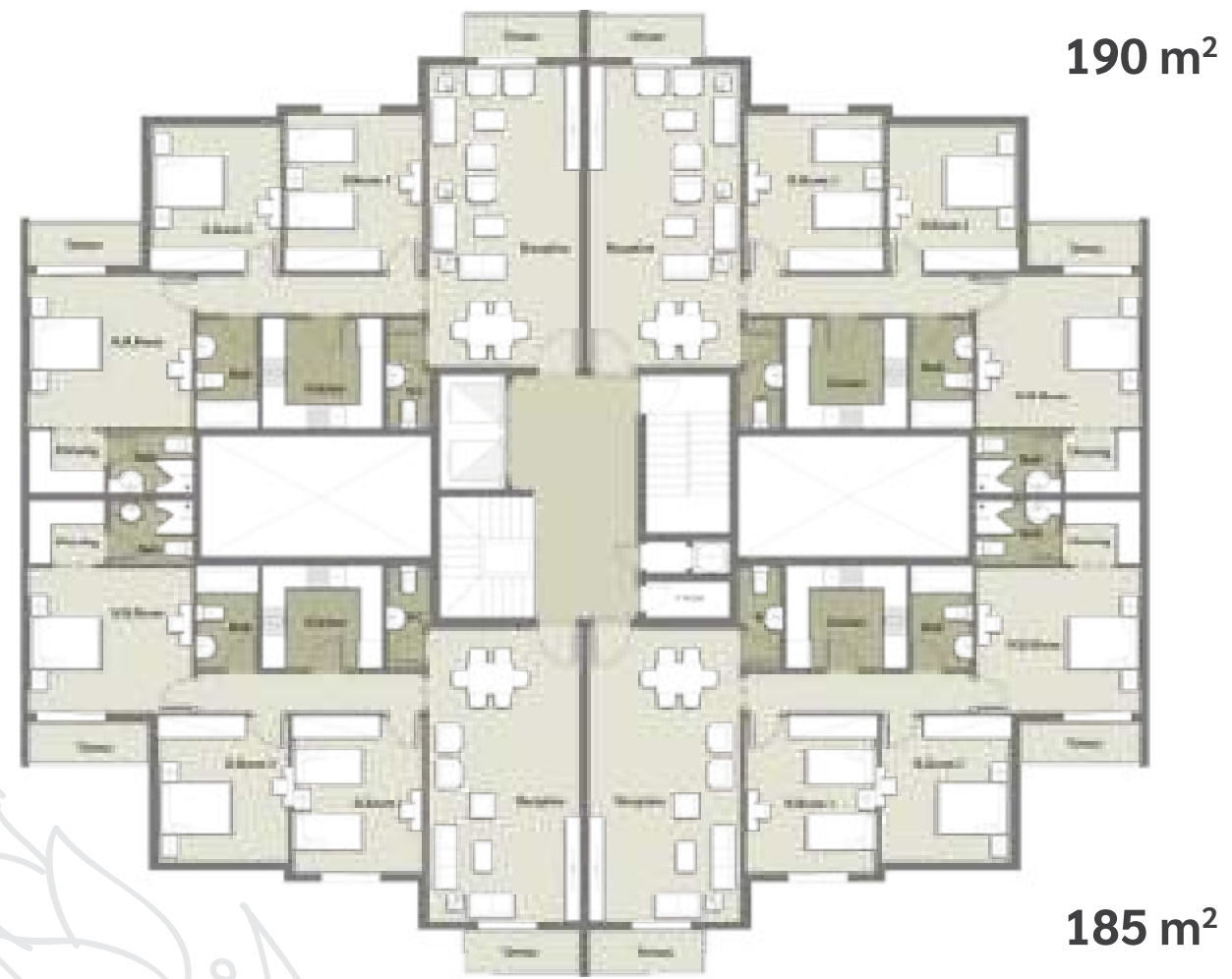


181 m²

176 m²

Type D





Type E





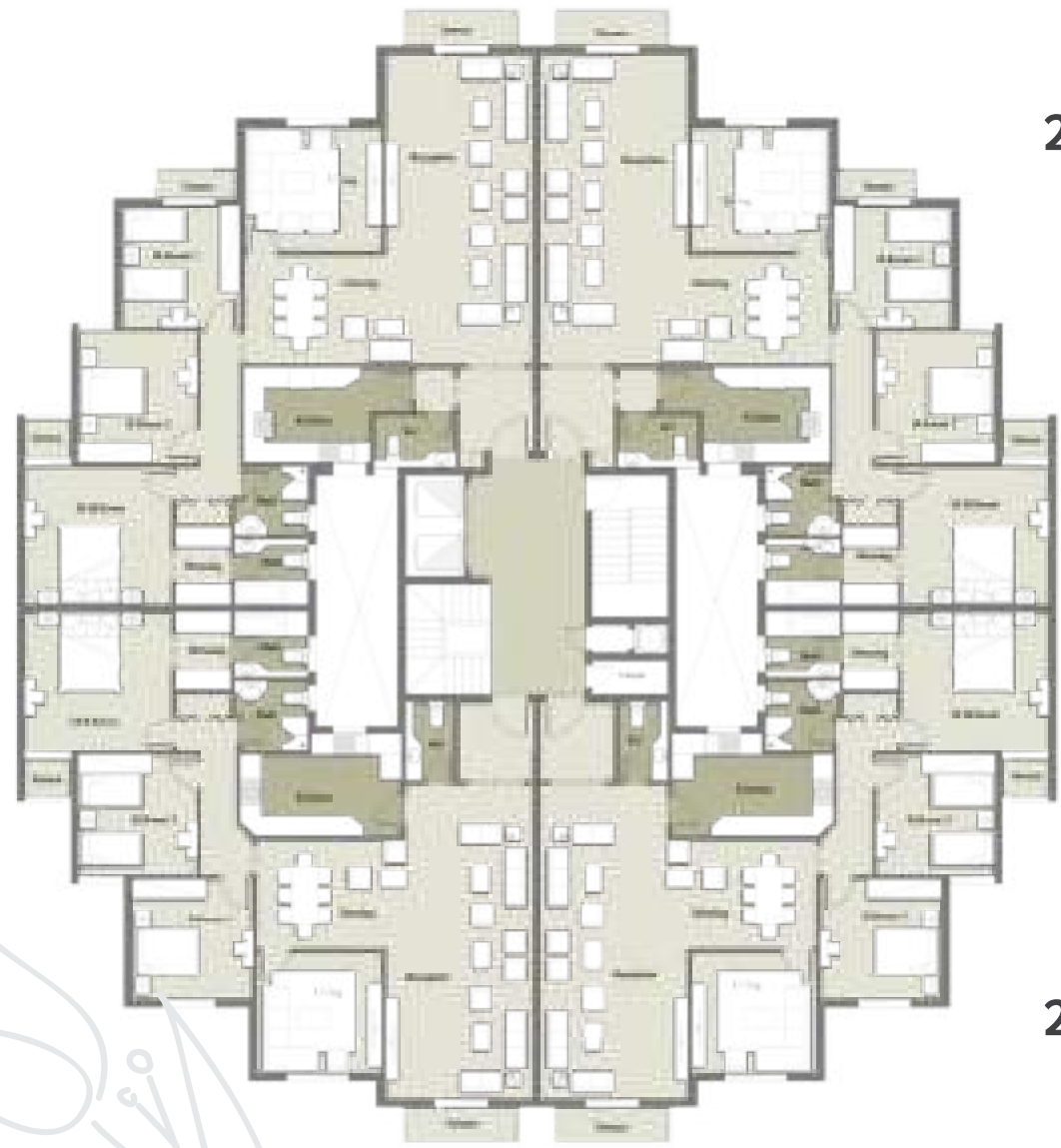
222 m²

200 m²

Type F



FLORIA
R8 - NEW CAPITAL
RESIDENCE



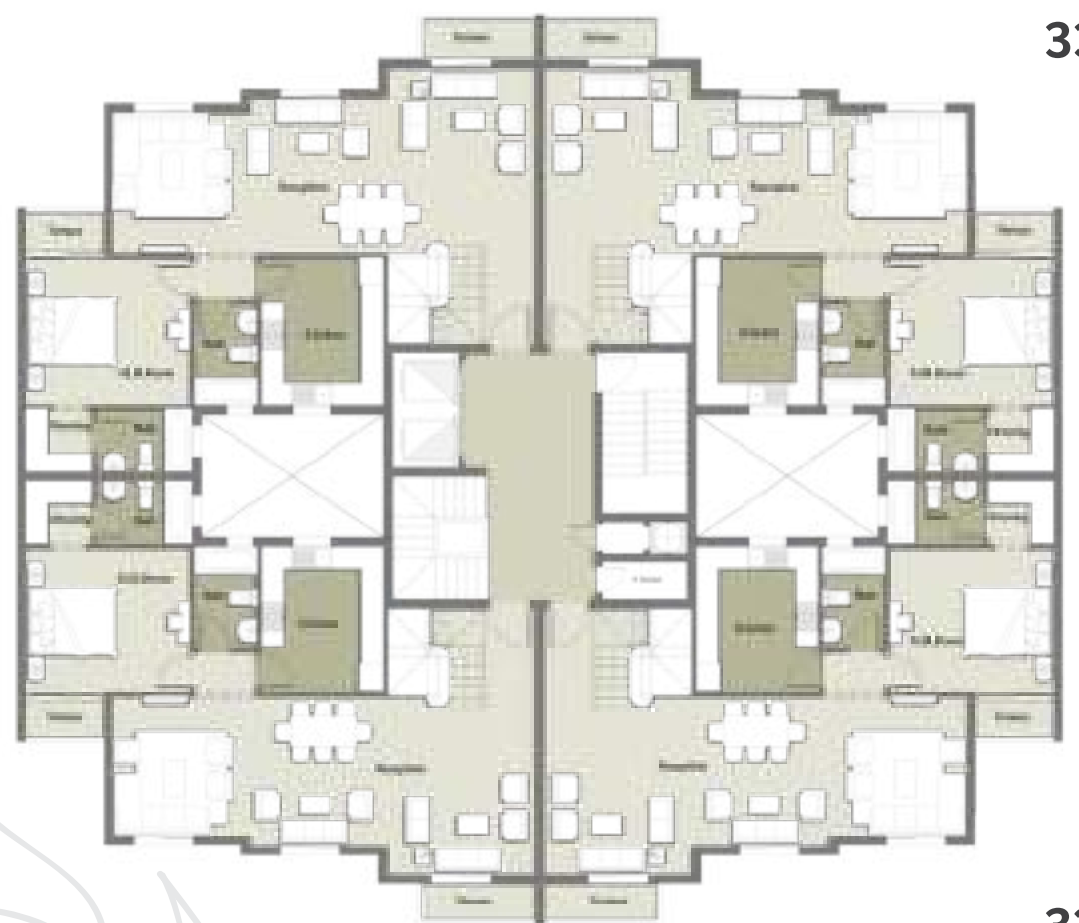
260 m²

240 m²

Type G



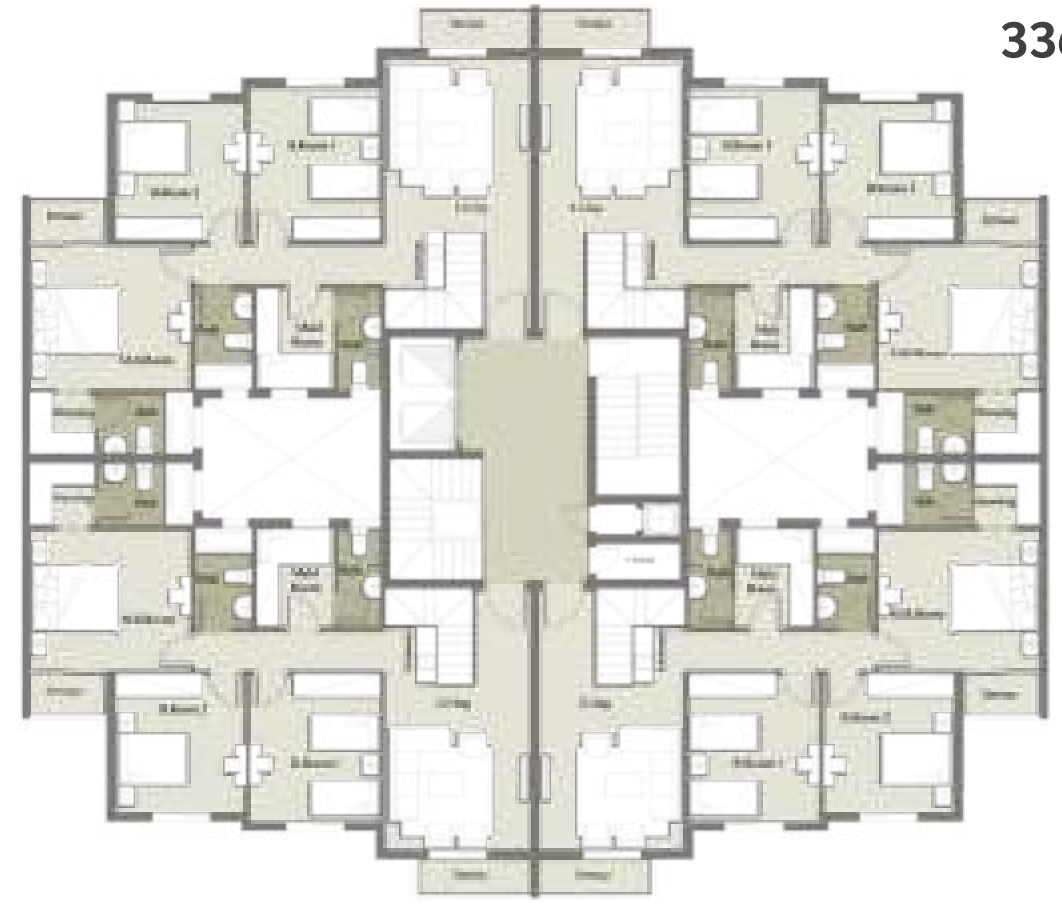

FLORIA
R8 - NEW CAPITAL
RESIDENCE



335 m²

326 m²

Lower Duplex

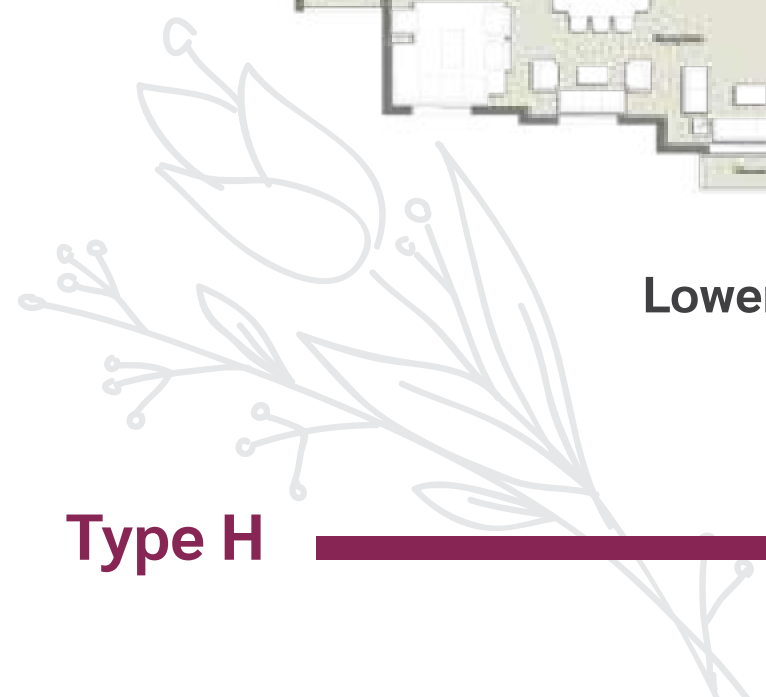


336 m²

313 m²

First

Type H



LANDSCAPE ELEMENTS



-  *Plumbago Capensis*
-  *Ixora Coccinea*
-  *Leucophyllum Frutescens*
-  *Pittosporum Tobira*
-  *Tecomaria Capensis*
-  *Quisqualis Indica*
-  *Russelia Equisetiformis*
-  *Strelitzia Reginae*
-  *Sophora Secundiflora*
-  *Duranta Erecta*
-  *Duranta Repens*
-  *Viburnum Suspensum*
-  *Vitex Agnus-Castus*
-  *Jasminum Azoricum*
-  *Cortaderia Selloana*
-  *Hemerocallis Fulva*
-  *Bougainvillea Glabra*
-  *Bougainvillea Spectabilis*
-  *Carissa Grandiflora*
-  *Cestrum Nocturnum*



-  *Aptenia Cordifolia*
-  *Artemisia Schmidiana*
-  *Carissa Grandiflora*
-  *Carpobrotus Edulis*
-  *Crossula Ovata*
-  *Dimorphotheca Aurantiaca*
-  *Euryops Pectinatus*
-  *Felicia Amelloides*
-  *Gazania Splendens*
-  *Kalanchoe Thyrsiflora*
-  *Lampranthus Aureus*
-  *Lampranthus Spectabilis*
-  *Lantana Camara Gold*
-  *Lantana Montevidensis*
-  *Pennisetum Setaceum*
-  *Pennisetum Setaceum Robrum*
-  *Pentas Lanceolata*
-  *Rhoeo Discolor*



SOFTSCAPE PALETTE SHRUBS

SOFTSCAPE PALETTE GROUNDCOVERS

LANDSCAPE ELEMENTS

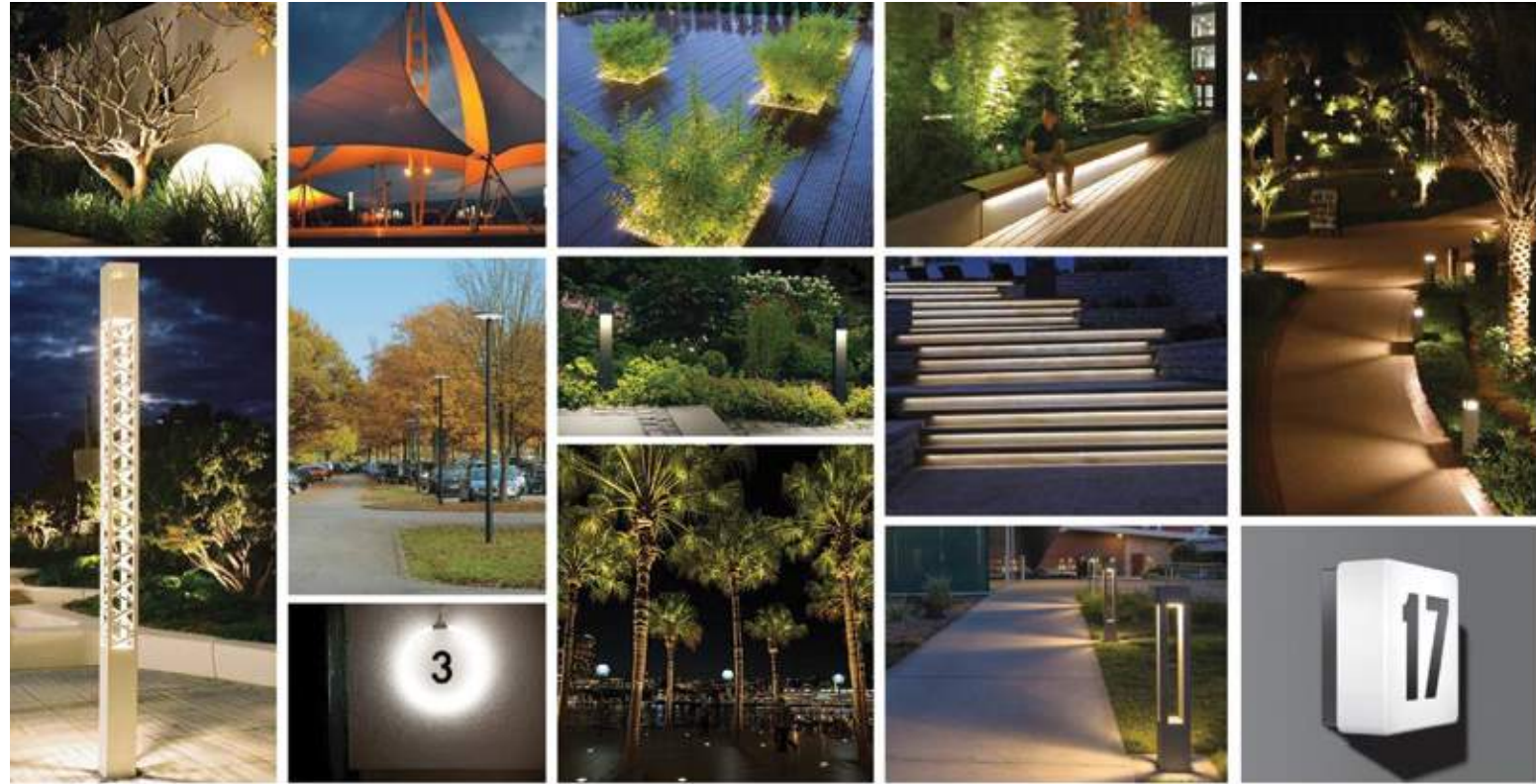


FURNITURE



WATER ELEMENTS

LANDSCAPE ELEMENTS



LIGHTING THEME



SIGNAGE THEME





FOURSEASONGROUP
—REAL ESTATE DEVELOPMENT—